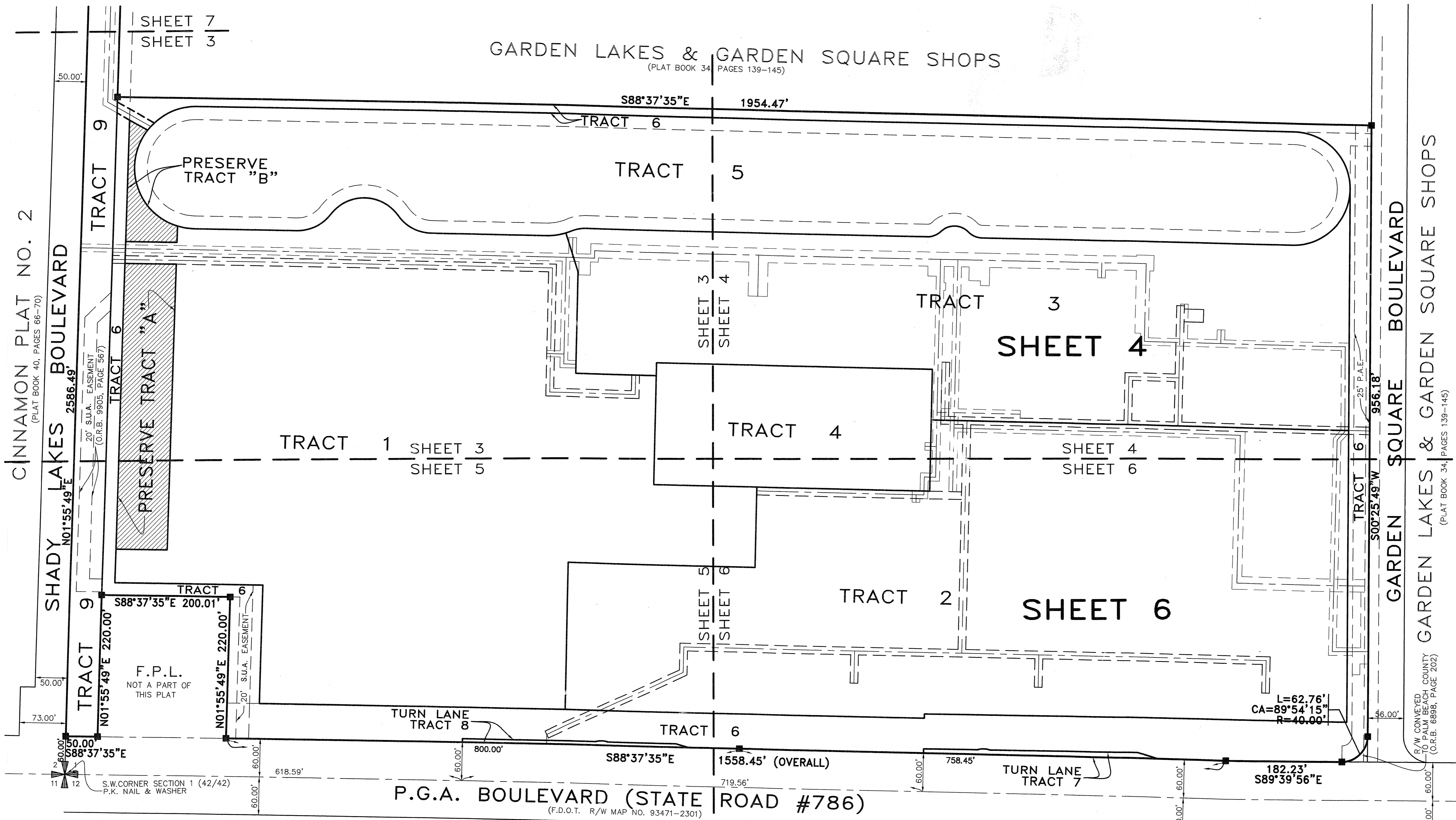
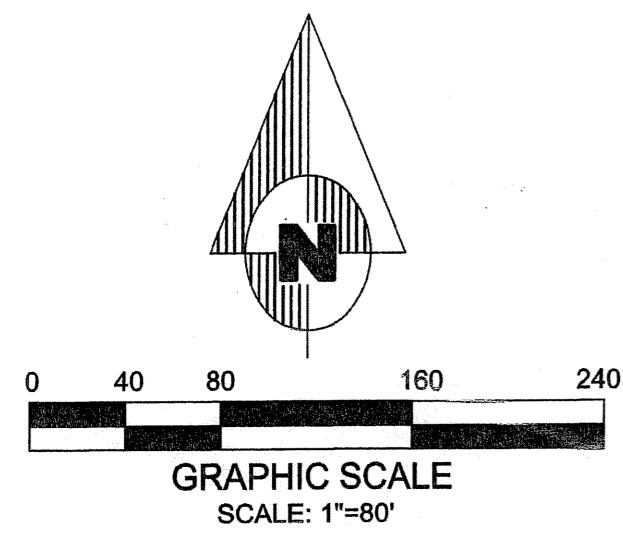


# BORLAND CENTER

IN SECTION 1, TOWNSHIP 42 SOUTH, RANGE 42 EAST  
 CITY OF PALM BEACH GARDENS, PALM BEACH COUNTY, FLORIDA  
 NOVEMBER 2004 SHEET 2 OF 8 SHEETS

111

STATE OF FLORIDA )  
 COUNTY OF PALM BEACH ) SS  
 THIS PLAT WAS FILED FOR  
 RECORD AT \_\_\_\_\_ DAY OF \_\_\_\_\_  
 THIS \_\_\_\_\_ A.D., 2004 AND  
 DULY RECORDED IN PLAT BOOK  
 \_\_\_\_\_ ON PAGES \_\_\_\_\_ AND \_\_\_\_\_  
 DOROTHY H. WILKEN, CLERK  
 CIRCUIT COURT  
 BY: \_\_\_\_\_ DC



U N P L A T T E D

S.E. CORNER OF SW 1/4  
 OF SECTION 1 (44/42)  
 PALM BEACH COUNTY  
 BRASS NAIL & DISK

**Dailey-Fotony, inc.**  
 land surveyors - planners  
 5050 10th Avenue North Suite B - Lake Worth, FL 33463-2062  
 Phone: 561-965-8787 Fax: 561-965-8963